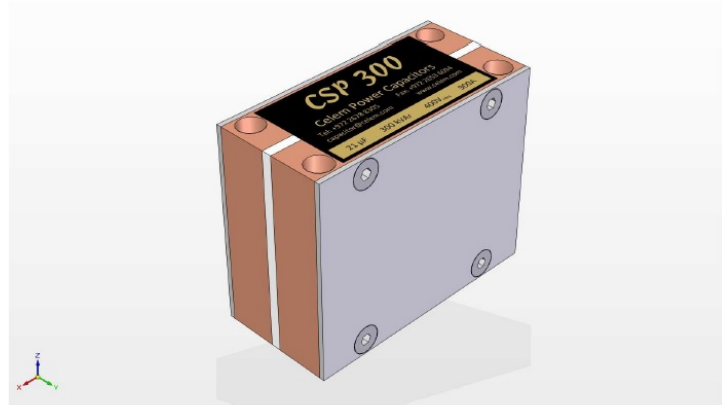
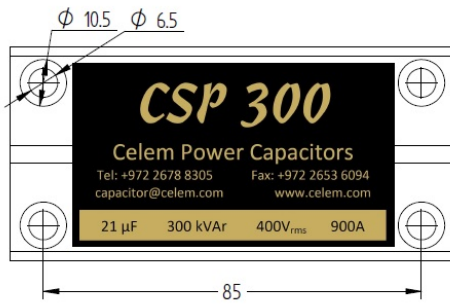
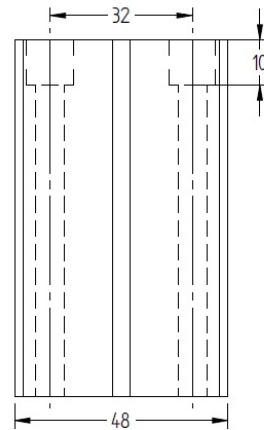
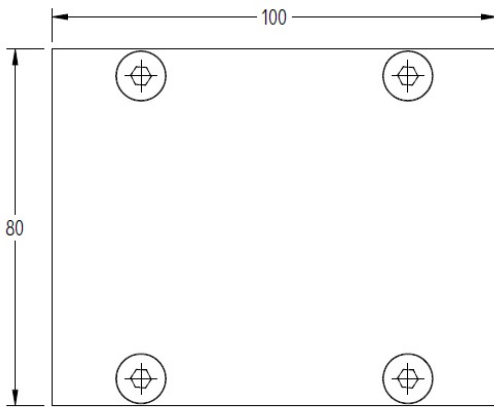


CSP 300

Conduction-cooled capacitor

Technology Patented Worldwide



The CSP 300 conduction-cooled capacitor is a 300kVAr capacitor for frequencies ranging from 10 to 60 kHz. The CSP300 can be mounted between two plates or on top of two base bars.

Specifications

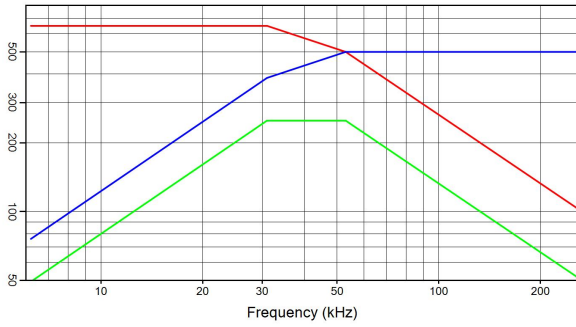
Type		CSP 300		
Dimensions (L x W x H)	mm	100 x 80 x 48		
Weight	kg	1.8		
Capacitance ($\pm 10\%$)	μF	3 μF	6.3 μF	21 μF
Sinusoidal Voltage	V _{rms}	650	600	400
Peak Voltage	V	920	850	570
Max. Current	A _{rms}	500	600	900
Max. Power	kVA _r	250	300	
Freq Range @ Full Power	kHz	31-53	21-30	14-20
Stray Inductance	nH	<5		

Celem Power Capacitors

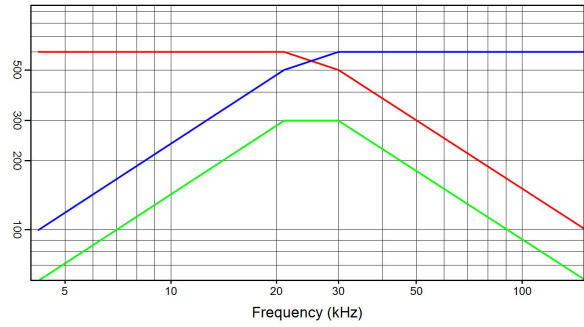
CSP 300

Conduction-cooled capacitor

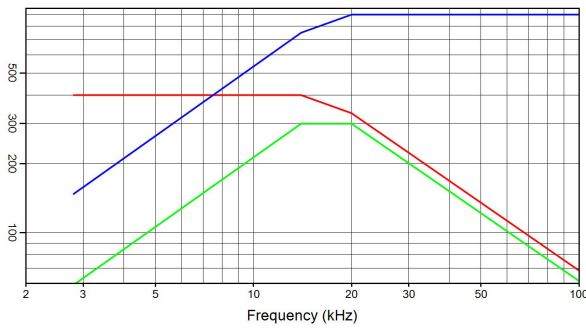
Technology Patented Worldwide



CSP 300 3 μF 650 V_{rms} 500 A_{rms} 250 kVA_r
 I(A) — Q(kVA_r) — V_{rms} —



CSP 300 6.3 μF 600 V_{rms} 600 A_{rms} 300 kVA_r
 I(A) — Q(kVA_r) — V_{rms} —



CSP 300 21 μF 400 V_{rms} 900 A_{rms} 300 kVA_r
 I(A) — Q(kVA_r) — V_{rms} —